

ACDEU



VARIOUS PATENTS APPLY

Priming Assisted Centrifugal Pump w/Autostart Model PA6C60-C4.4T Size 6" x 6"



Total Head		Capacity of Pump in U.S. Gallons per Minute (GPM) at Continuous Performance			
P.S.I.	Feet				
59.0	136	600	600	600	600
52.0	120	920	1020	1020	1020
43.4	100	1035	1420	1440	1480
34.7	80	1040	1440	1720	1840
26.0	60	1100	1440	1740	1990
17.3	40	1150	1445	1755	2000
8.7	20	1070	1450	1760	2000
Suction Lift		25'	20'	15'	10'

PUMP SPECIFICATIONS

Size: 6" x 6" (152 mm x 152 mm) Flanged.

Casing: Ductile Iron 65-45-12.

Maximum Operating Pressure 98 psi (676 kPa).*

Semi-Open, Two Vane Impeller: Ductile Iron 65-45-12.

Handles 3" (76,2 mm) Diameter Spherical Solids.

Impeller Shaft: Stainless Steel 17-4 PH.

Replaceable Wear Plate: Ductile Iron 80-60-03.

Bearing Housing: Gray Iron 30.

Seal Plate: Carbon Steel 1015.

Seal: Mechanical, Oil-Lubricated. Silicon Carbide Rotating and Stationary Faces. Stainless Steel 316 Stationary Seat. Fluorocarbon Elastomers (DuPont Viton® or Equivalent). Stainless Steel 18-8 Cage and Spring. Maximum Temperature of Liquid Pumped, 160°F (71°C).*

Shaft Sleeve: Stainless Steel 17-4 PH.

Priming Chamber: Gray Iron 30 Housing w/Stainless Steel Float and Linkage.

Discharge Check Valve: Ductile Iron Housing w/Buna-N Flapper.

Radial and Thrust Bearings: Open Double Ball.

Bearing and Seal Cavity Lubrication: SAE 30 Non-Detergent Oil.

O-Rings: Buna-N.

Gaskets: Resistant Synthetic Rubber, Cork, Buna-N, Vegetable Fiber and Compressed Synthetic Fibers.

Hardware: Standard Plated Steel.

Bearing and Seal Cavity Oil Level Sight Gauges.

**Consult Factory for Applications Exceeding Maximum Pressure and/or Temperature Indicated.*

Standard Equipment: Gear-Driven Air Compressor. Hoisting Bail. Combination Skid Base w/Fuel Tank. Strainer. Single Ball Type Float Switch.**

***50 Ft. (15 m) Standard Length; Dual Switches and Alternate Cable Lengths Available From the Factory.*

Optional Equipment: Battery. Suction and Discharge NPT Threaded Flange Kits. High Speed (55 MPH/89 KM/H) Single Axle Pneumatic-Tired Wheel Kit. Tandem Axle Over-the-Road Trailer (Meets DOT and Transport Canada Requirements) Available w/Either Electric or Hydraulic Surge Brakes, Running Lights, Jack Stands and Safety Cables/Chains. EPS w/Submersible Transducer Liquid Level Sensor. **



SHOWN WITH OPTIONAL WHEEL KIT



ENGINE SPECIFICATIONS

Model: Caterpillar C4.4T.

Type: Four Cylinder, Four Cycle, Turbocharged, Liquid Cooled Diesel Engine.

Displacement: 269 Cu. In. (4,41 Liters).

Governor: Electronic.

Lubrication: Forced Circulation.

Air Cleaner: Dry Type.

Oil Reservoir: 7.3 U.S. Qts. (6,9 liters) Refill.

Fuel Tank: 88 U.S. Gals. (330 liters).

Full Load Operating Time: 21.7 Hrs Estimated.

Starter: 12V Electric.

Standard Features: Low Oil Pressure and High Coolant Temperature Safety Shut Down Switches. Autostart Instrument Panel Includes: Tachometer, Voltmeter, Hourmeter, Coolant Temperature Gauge, Oil Pressure Gauge, Manual/Stop/Auto Key Switch, 10 Amp Pushbutton Circuit Breaker, Startup Warning Delay. Muffler w/Weather Cap. Throttle Control.

CATERPILLAR PUBLISHED PERFORMANCE:
Maximum Gross BHP (Intermittent) 97 (72,3 kW) @ 2200 RPM



THE GORMAN-RUPP COMPANY • MANSFIELD, OHIO

GORMAN-RUPP OF CANADA LIMITED • ST. THOMAS, ONTARIO, CANADA

www.grpumps.com

Specifications Subject to Change Without Notice

Printed in U.S.A.

Specification Data

SECTION 42, PAGE 1121C

APPROXIMATE
DIMENSIONS and WEIGHTS

NET WEIGHT:

SHIPPING WEIGHT:

EXPORT CRATE SIZE:

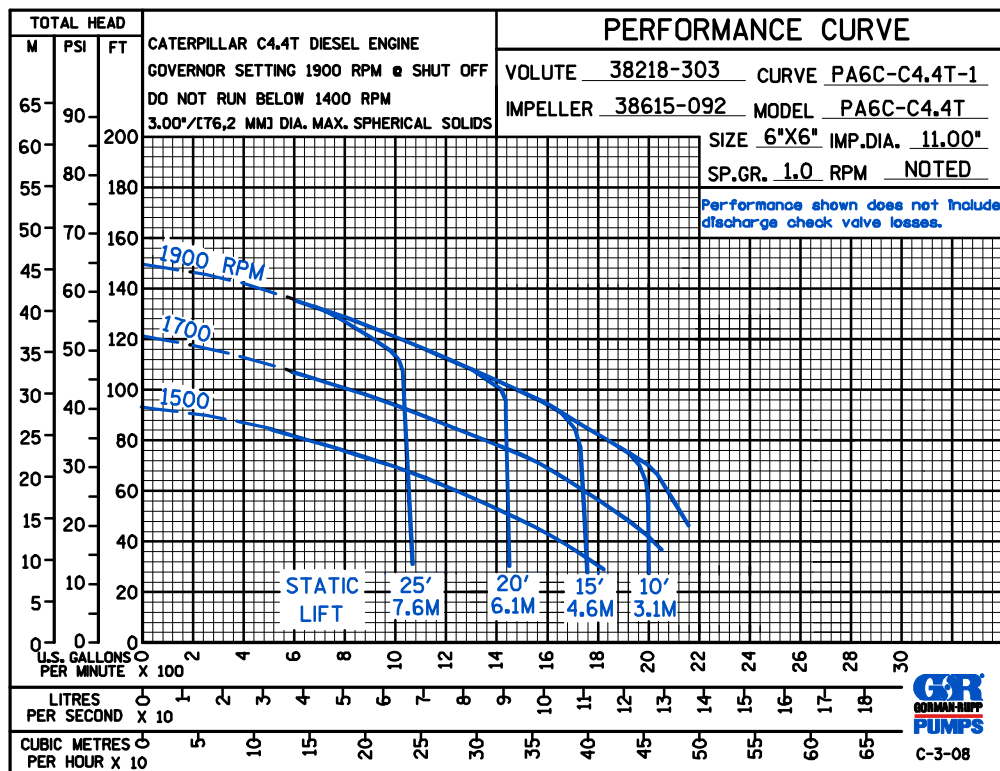
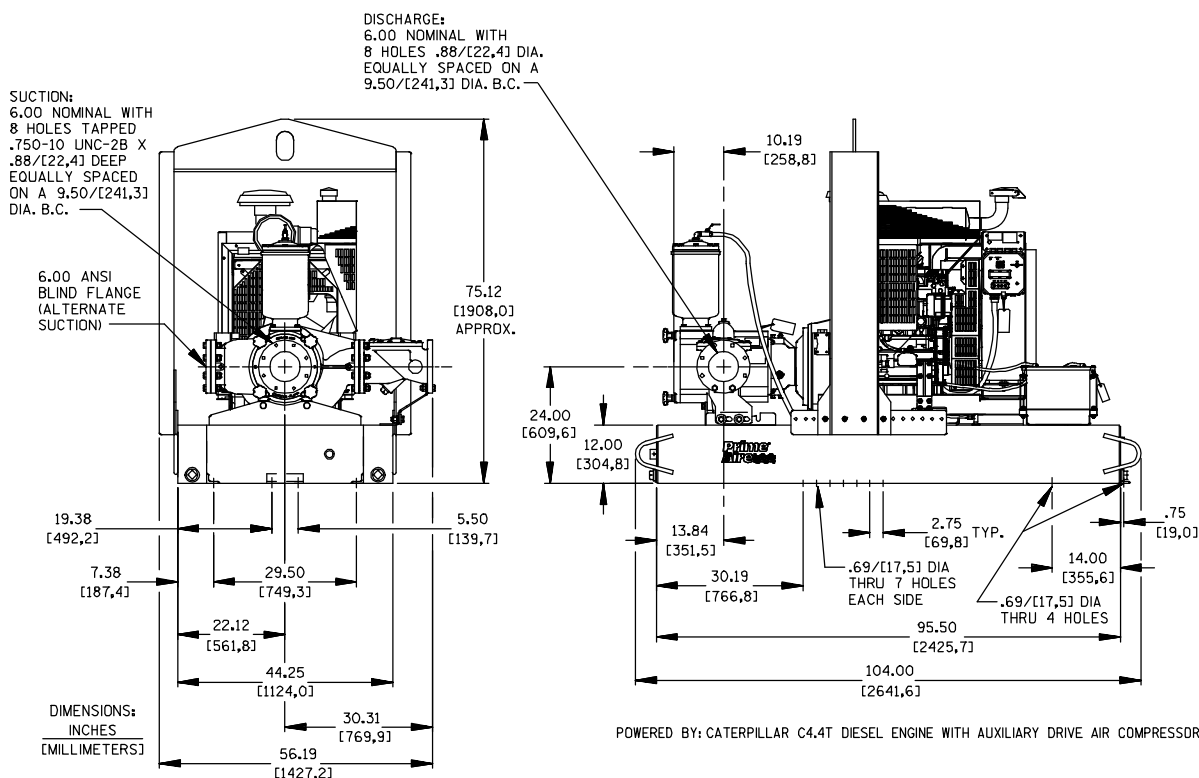
SKID BASE

2-WHEEL

3360 LBS. (1524 KG.) 3960 LBS. (1796 KG.)

3600 LBS. (1633 KG.) 3960 LBS. (1796 KG.)

321 CU. FT. (9.1 CU. M.)



THE GORMAN-RUPP COMPANY • MANSFIELD, OHIO

GORMAN-RUPP OF CANADA LIMITED • ST. THOMAS, ONTARIO, CANADA

Specifications Subject to Change Without Notice

Printed in U.S.A.